



Pacific Operations

**PROVIDING SAFE, RELIABLE ENERGY
TRANSPORTATION AND STORAGE**

Through its Pacific Operations unit, Kinder Morgan operates approximately 3,000 miles of refined products pipeline that serves Arizona, California, Nevada, New Mexico, Oregon, Washington and Texas. With roots dating back to 1956, this is the largest products pipeline in the Western U.S., transporting more than one million barrels per day of gasoline, jet fuel and diesel fuel to our customers. Additionally, our company-owned terminals provide services such as liquid petroleum product storage and loading facilities for delivery trucks.

Kinder Morgan’s Pacific Operations unit is comprised of the Northern Region and Southern Region gathering systems, pipelines and terminals.

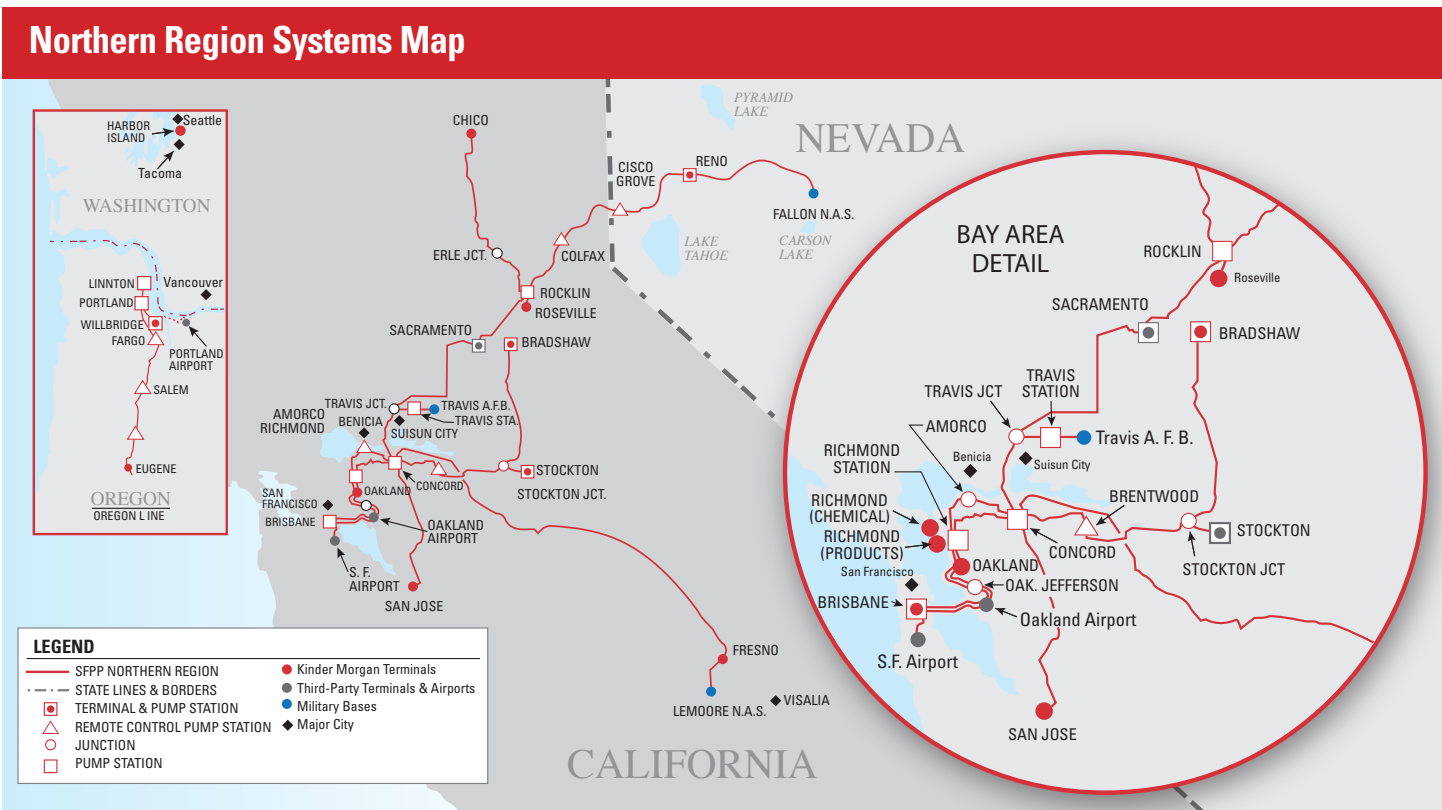
The Kinder Morgan entities that operate Pacific Region assets include SFPP, LP; CALNEV Pipe Line, LLC; Kinder Morgan Liquids Terminals, LLC; Kinder Morgan Cochin, LLC; Kinder Morgan Phoenix Holdings, LLC; and Lomita Rail, LLC.

Pacific Operations Northern Region

The Northern Region consists of a gathering system in Portland, Oregon, which offers third-party terminal connectivity to Portland Station for shipments to Kinder Morgan’s Willbridge Terminal, including a connection to the Portland Airport, and also to Kinder Morgan’s Eugene Terminal.

The region also includes gathering systems at Concord and Richmond, California, which connect refineries and third-party terminals to multiple destinations in the Bay Area and northern and central regions of California, and in Reno, Nevada.

Schematics for gathering systems, pipelines and terminals follow, along with specifications and services provided at each Kinder Morgan terminal.

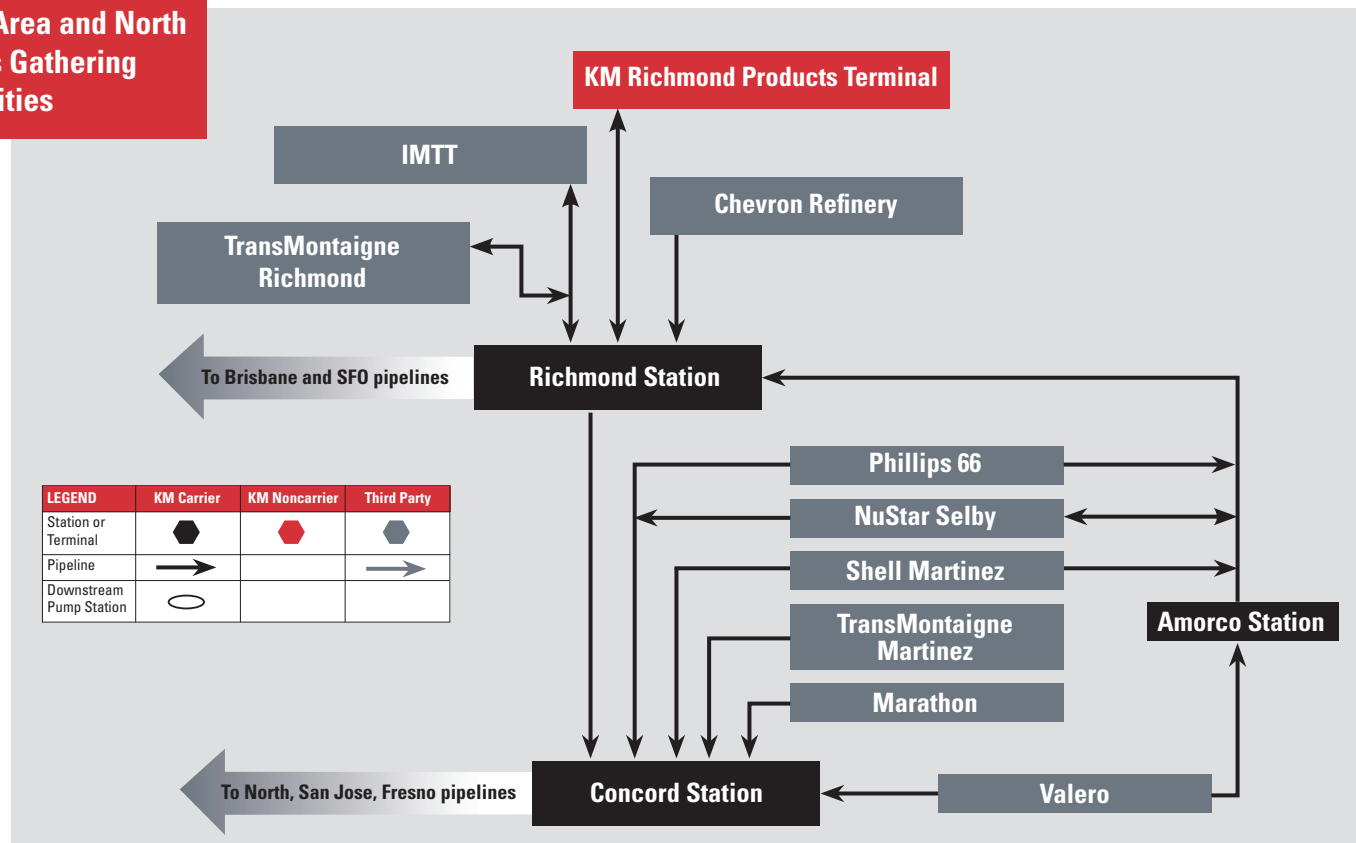


NORTHERN REGION | Gathering Facilities and Pipelines

Northern Region Origins and Destinations

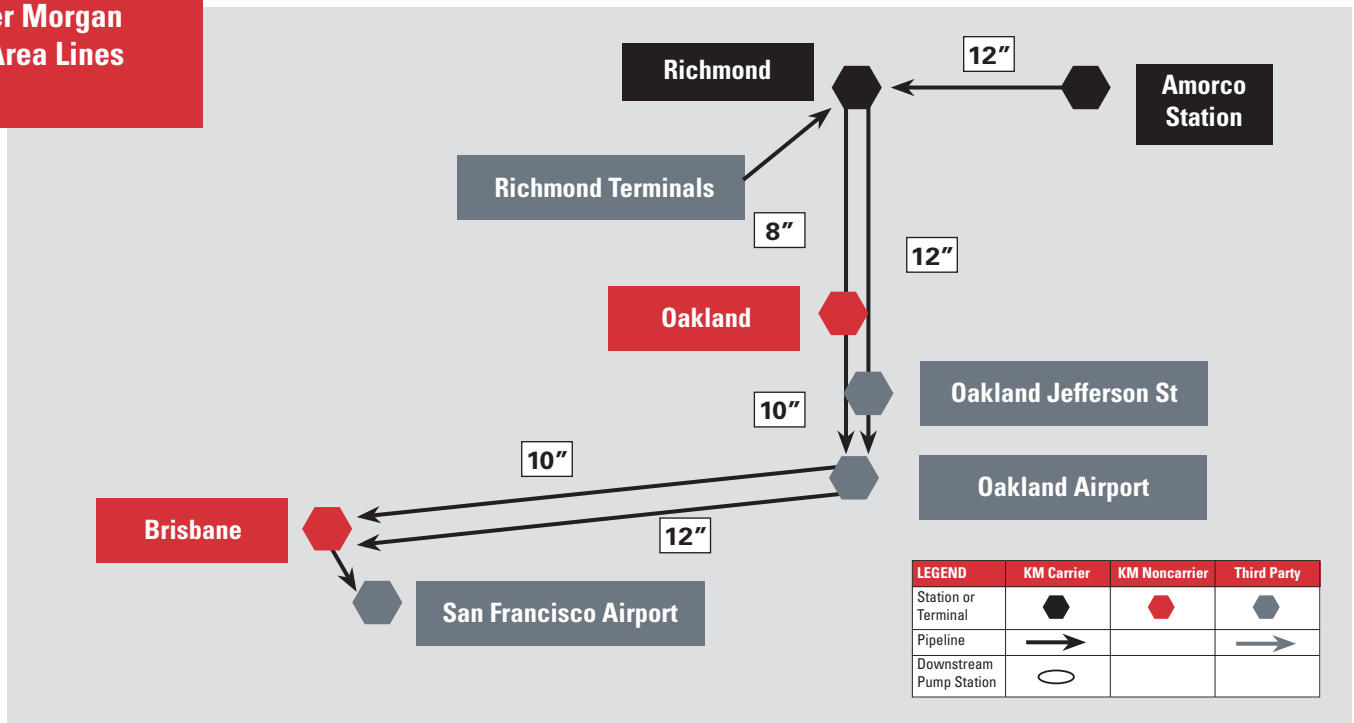
Bay Area Lines	Origin - Richmond Station - Amorco Station	Destination - Brisbane, CA - San Francisco Airport - Oakland Airport
North Line	Origin - Richmond Station - Concord Station	Destination - Bradshaw, CA - Richmond, CA (Products) - Chico, CA - Sacramento, CA - Fresno, CA - San Jose, CA - Reno, NV - Stockton, CA
Oregon Line	Origin - Portland Station	Destination - Eugene, OR
Other Pacific Northwest Terminals	Origin - Marine or Third Party (Olympic PL)	Destination - Harbor Island Terminal – Seattle, WA - Linnton Terminal – Portland, OR - Willbridge Terminal – Portland, OR
PDX Line	Origin - Willbridge Terminal - Portland, OR	Destination - Portland International Airport

Bay Area and North Lines Gathering Facilities



NORTHERN REGION | Gathering Facilities and Pipelines

Kinder Morgan Bay Area Lines



ORIGINS

Richmond Area Supply Richmond direct access through gathering lines; Bay Area pipelines origin

Concord Area Supply Richmond direct access through 12" LS 37 line

DESTINATIONS

Richmond Deliveries to third-party terminals Gasoline, diesel

Richmond KM Terminal Gasoline, diesel

Oakland Deliveries to railroad yard Diesel

Oakland Jefferson St Deliveries to third-party terminal Jet fuel

Oakland Airport Deliveries into airport storage Jet fuel

Brisbane KM terminal Gasoline, diesel, jet fuel

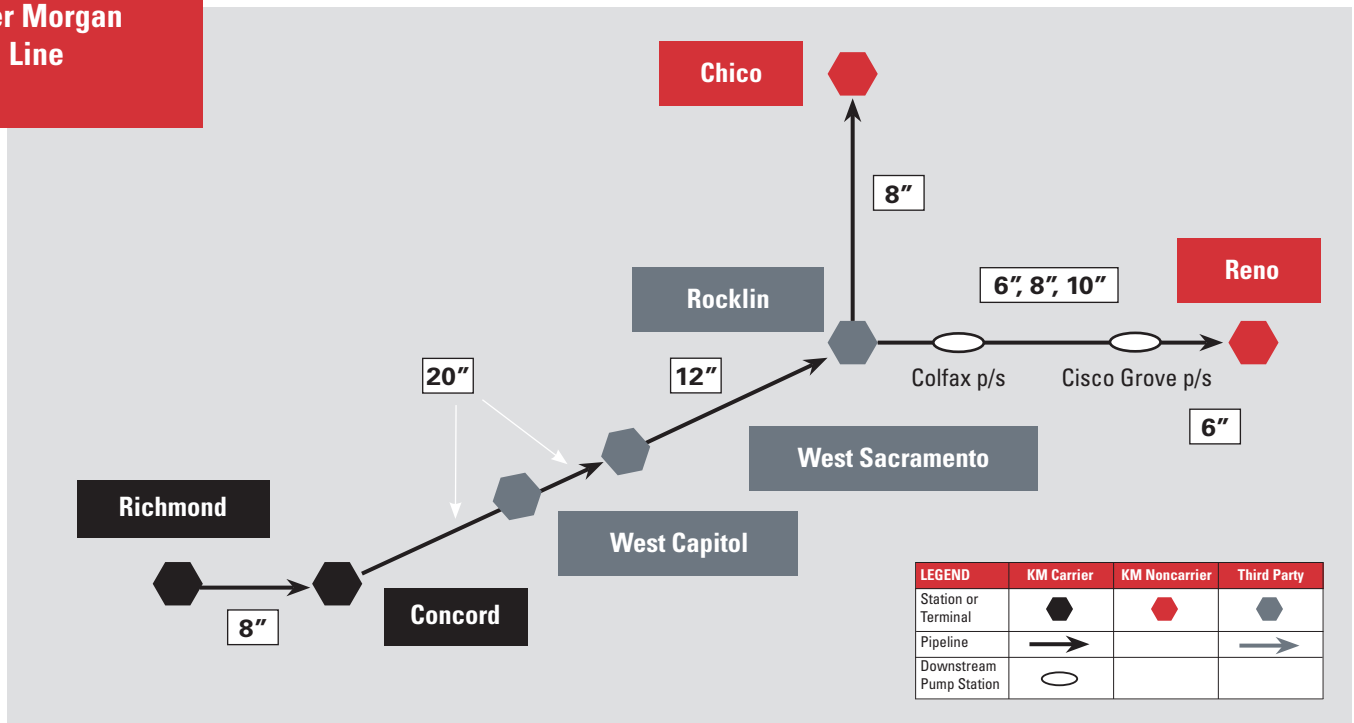
San Francisco Airport Deliveries to airport storage Jet fuel

Notes:

- » Lines are operated by SFPP, LP
- » Turbine service via 10" line from Richmond to Oakland Airport and Brisbane Terminal
- » Turbine service via 12" line from Richmond to Oakland Jefferson St., Oakland Airport, Brisbane Terminal and San Francisco International Airport
- » Gasoline/diesel service via 8" line to Oakland railroad yard, then 10" to Brisbane
- » No breakout storage available at Richmond

NORTHERN REGION | Gathering Facilities and Pipelines

Kinder Morgan North Line



ORIGINS

Richmond Direct pumping into 8" Richmond Concord line

Concord Via gathering lines into Concord Breakout facility; North Line origin

DESTINATIONS

West Capitol Jct Via 20" mainline to third-party pipeline to Sacramento Airport Jet fuel

West Sacramento Deliveries via 20" mainline to third-party terminals Gasoline, diesel

Roseville Via 12" mainline to breakout facility for Chico and Reno pipelines; deliveries to railroad yard Diesel

Chico KM terminal Gasoline, diesel

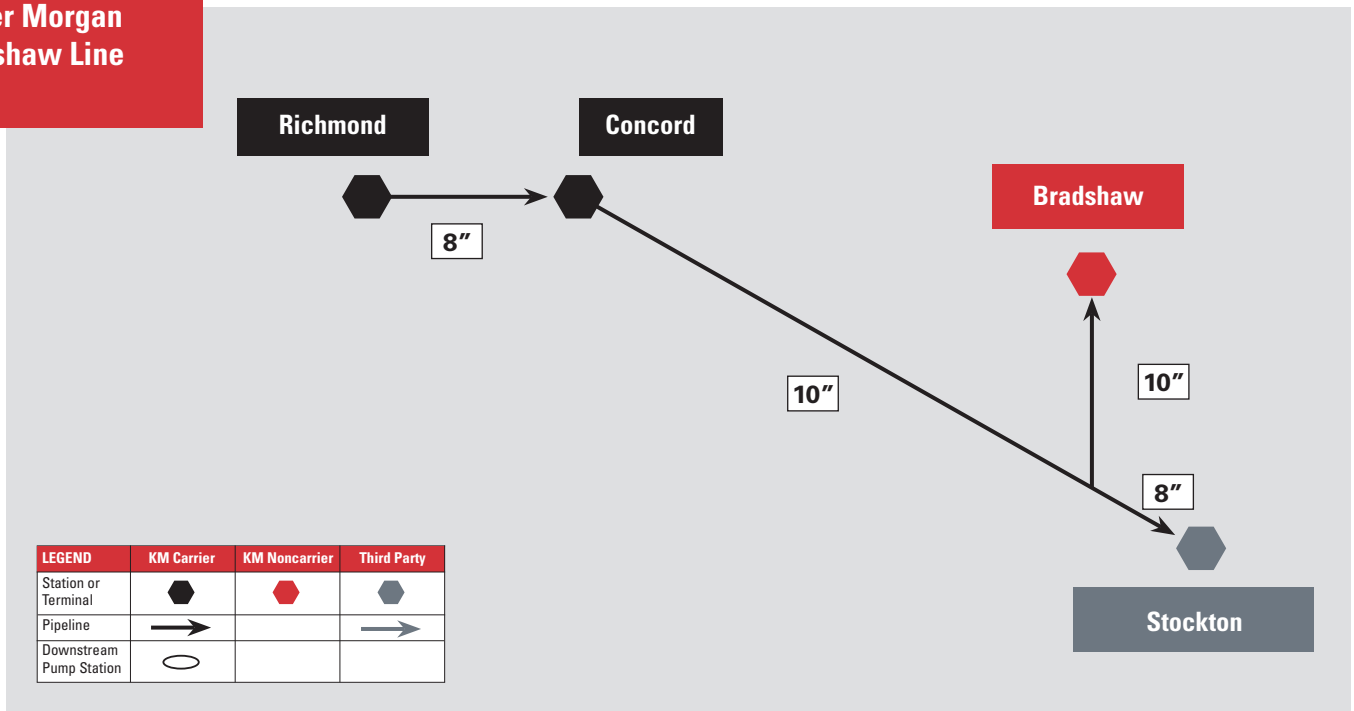
Reno KM and third-party terminals; third-party connecting line to Reno Airport Gasoline, diesel, jet fuel

Notes:

- » Lines are operated by SFPP, LP
- » Service via 20" line from Concord to Travis, West Capitol and West Sacramento; via 12" pipeline from West Sacramento to Rocklin breakout
- » SFPP Breakout facility at Rocklin for Chico and Reno movements

NORTHERN REGION | Gathering Facilities and Pipelines

Kinder Morgan Bradshaw Line



ORIGINS

Richmond Direct pumping into 8" Richmond Concord line

Concord Via gathering lines into Concord Breakout facility; Bradshaw Line origin

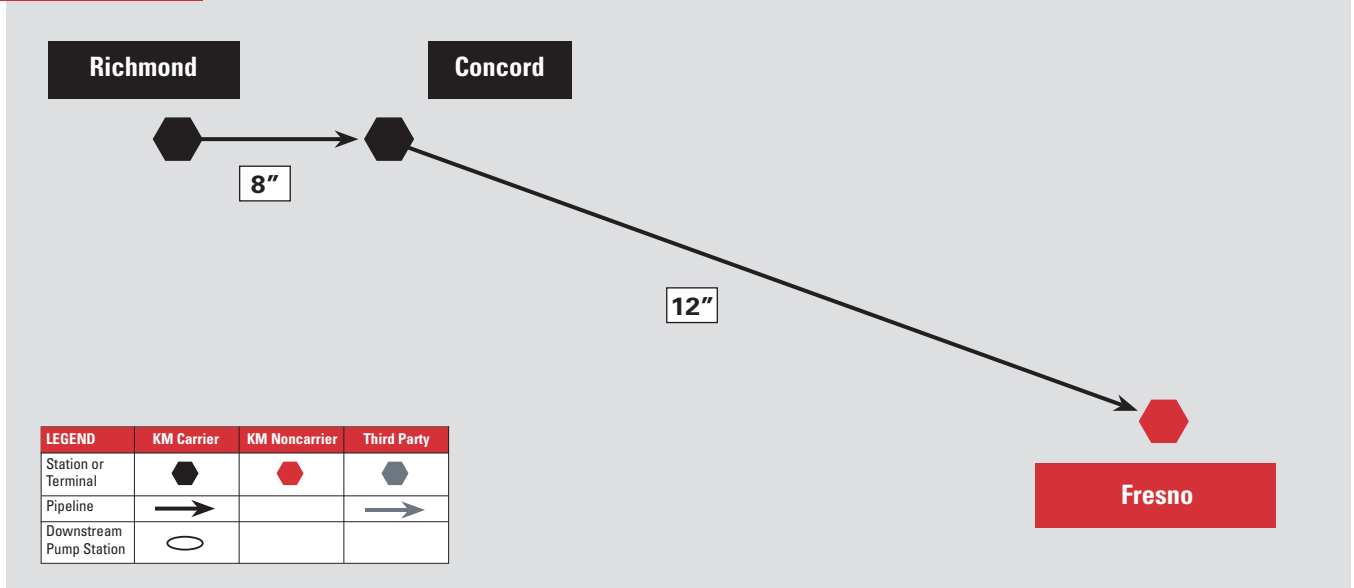
DESTINATIONS

Stockton Via 10" from Concord to Stockton Jct, then 8" Stockton lateral to third-party terminals Gasoline, diesel

Bradshaw KM terminal Gasoline, diesel, jet fuel

NORTHERN REGION | Gathering Facilities and Pipelines

Kinder Morgan Fresno Line



ORIGINS

Richmond Direct pumping into 8" Richmond Concord line

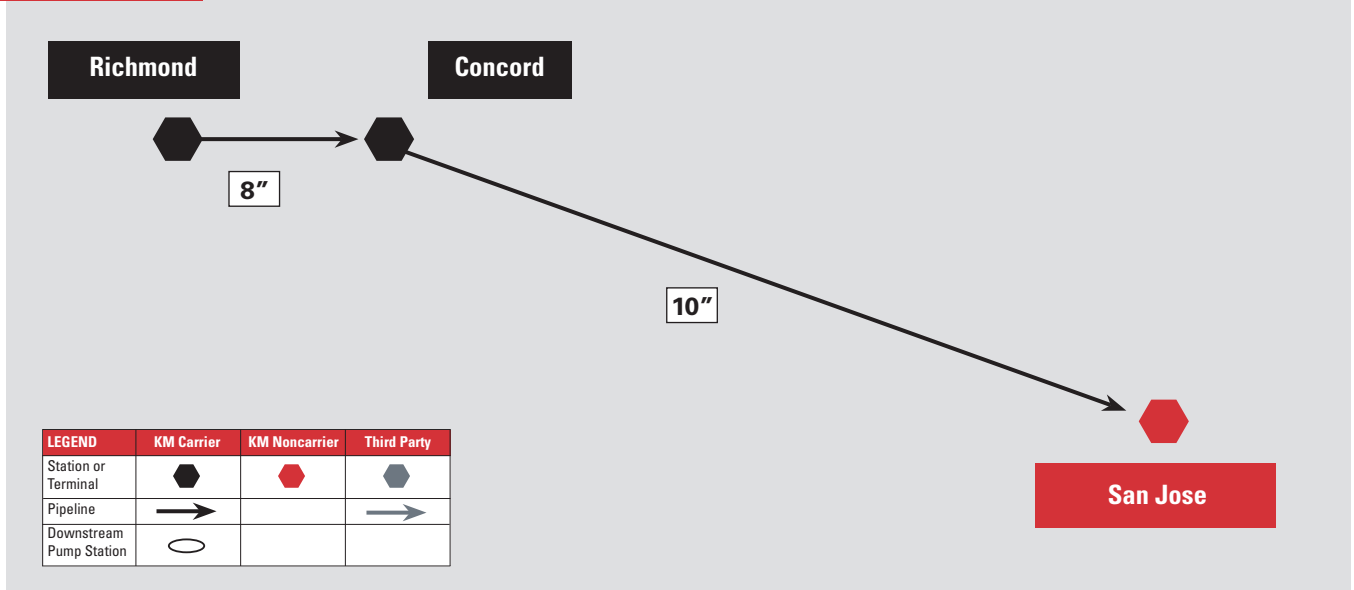
Concord Via gathering lines into Concord Breakout facility; Fresno Line origin

DESTINATIONS

Fresno KM terminal Gasoline, diesel

NORTHERN REGION | Gathering Facilities and Pipelines

Kinder Morgan San Jose Line



ORIGINS

Richmond Direct pumping into 8" Richmond Concord line

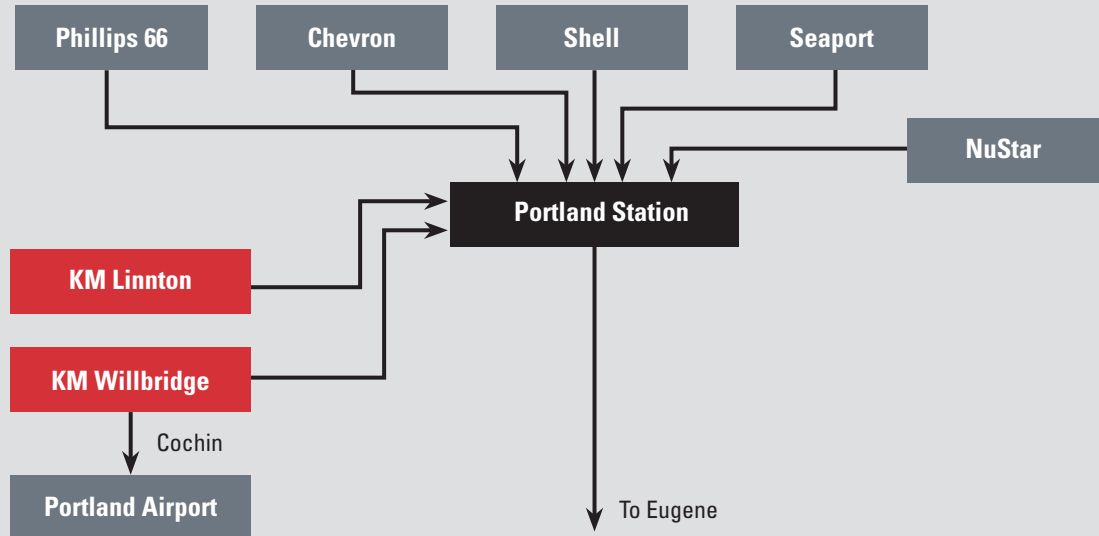
Concord Via gathering lines into Concord Breakout facility; San Jose Line origin

DESTINATIONS

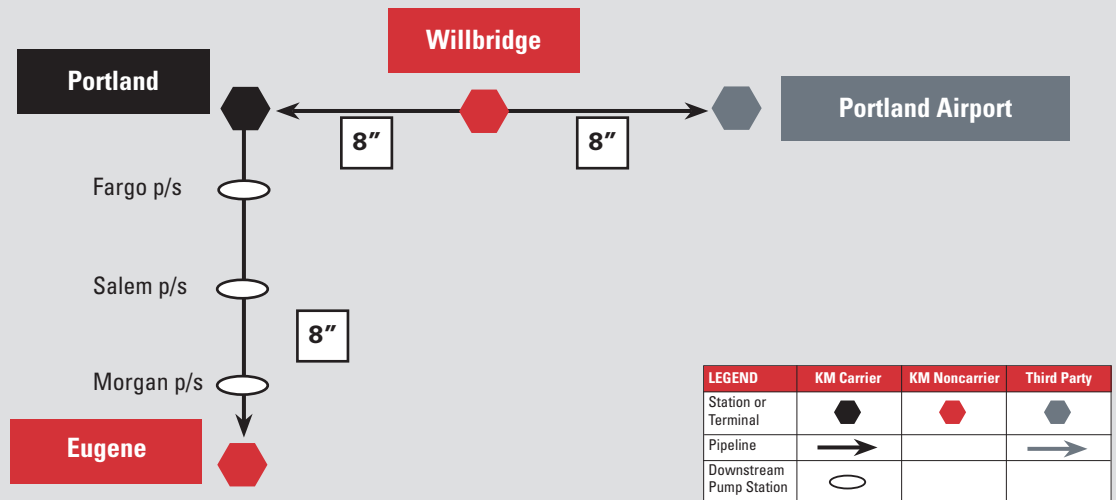
San Jose KM and third-party terminals; connecting line to San Jose Airport Gasoline, diesel, jet fuel

NORTHERN REGION | Gathering Facilities and Pipelines

Oregon Line Gathering Facilities



Kinder Morgan Oregon Line



ORIGINS

Portland	Direct pumping into 8" Eugene line
Willbridge	Direct pumping into 8" Portland Airport line

DESTINATIONS

Eugene	KM terminal	Gasoline, diesel
Portland Airport	Deliveries to airport facilities	Jet fuel

Notes:

- » Eugene pipeline operated by SFPP, LP; Portland Airport pipeline operated by KMLT and owned by Cochin Pipeline Co.
- » Eugene pipeline originates at various Portland terminals and supplies Eugene, OR; pipeline has three downstream pump stations
- » Portland Airport line originates at KM's Willbridge terminal

NORTHERN REGION TERMINALS

Bradshaw Terminal

2901 Bradshaw Rd.
Sacramento, CA 95827

Phone: (916) 363-1666
Fax: (916) 369-0335

» Specifications

- 35 total acres
- 16 refined petroleum products tanks
- Total storage capacity = 446,200 barrels
- Range of tanks = 5,000–55,000 barrels

» Products

- CARB gas, CARB ULSD, turbine, ethanol

» Logistics

Inbound:

- KM Concord to Bradshaw 10" pipeline
- Ethanol truck offloading

Outbound:

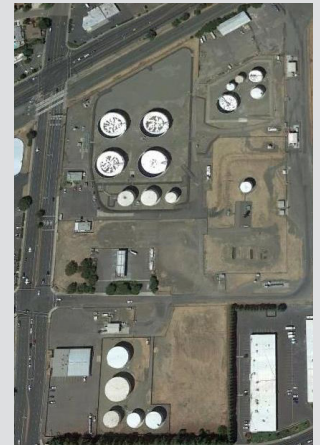
- Major roadways: US-50, Jackson Hwy (CA-16)

» Loading Racks

- Three truck loading racks
- Toptech TMS6 rack automation
- Midgrade blending services
- CARB detergent additive systems
- Diesel and turbine red dye injection
- Ethanol storage and rack injection

» Other

- Diesel lubricity additive



Brisbane Terminal

950 Tunnel Ave
Brisbane, CA 94005

Phone: (415) 467-8107
Fax: (415) 467-6787

» Specifications

- 25 total acres
- 20 refined petroleum products tanks
- Total storage capacity = 618,000 barrels
- Range of tanks = 10,000–75,000 barrels

» Products

- CARB gas, CARB ULSD, turbine, ethanol

» Logistics

Inbound:

- KM multiproducts 10" pipeline from Richmond/Concord
- KM turbine fuel 12" pipeline from Richmond/Concord
- Ethanol truck offloading

Outbound:

- Major roadway: US-101
- Trans shipment pipeline for turbine to San Francisco Airport

» Loading Racks:

- Four truck loading racks
- Toptech TMS6 rack automation
- Midgrade blending
- Ethanol storage and sequential rack blending
- CARB detergent additive systems

» Other:

- Diesel lubricity additive



NORTHERN REGION TERMINALS

Chico Terminal

2570 Hegan Lane
Chico, CA 95928

Phone: (530) 342-6140
Fax: (530) 896-1834

» Specifications

- 40 total acres
- 33 refined petroleum products tanks
- Total storage capacity = 557,400 barrels
- Range of tanks = 5,000–60,000 barrels

» Products

- CARB gas, CARB ULSD (B5), biodiesel, ethanol

» Logistics

Inbound:

- KM Rocklin to Chico 8" lateral
- Biodiesel truck offloading
- Ethanol truck offloading

Outbound:

- Major roadways: US-99, CA-32

» Loading Racks

- Four truck loading racks
- Toptech TMS6 rack automation
- Midgrade blending
- Ethanol storage and sequential rack blending
- CARB detergent additive systems
- Diesel red dye injection services

» Other

- Diesel lubricity additive



Eugene Terminal

1765 Prairie Rd
Eugene, OR 97402

Phone: (541) 689-1545
Fax: (541) 689-9861

» Specifications

- 34 total acres
- 42 refined petroleum products tanks
- Total storage capacity = 708,100 barrels
- Range of tanks = 5,000–60,000 barrels

» Products

- Conventional gas, EPA ULSD (B5), ethanol

» Logistics

Inbound:

- KM Portland to Eugene pipeline
- Ethanol truck offloading

Outbound:

- Major roadways: Beltline Hwy, OR-569, OR-99, I-5

» Loading Racks

- Four truck loading racks
- Toptech TMS6 rack automation
- Midgrade blending
- Ethanol storage and sequential rack blending
- EPA detergent additive systems
- Diesel red dye injection services

» Other

- Diesel conductivity additive



NORTHERN REGION TERMINALS

Fresno Terminal

4149 South Maple Ave
Fresno, CA 93725

Phone: (559) 237-4612
Fax: (559) 268-9015

» Specifications

- 78 total acres
- 26 refined petroleum products tanks
- Total storage capacity = 878,200 barrels
- Range of tanks = 10,000–80,000 barrels

» Products

- CARB gas, CARB ULSD (B5), biodiesel, ethanol

» Logistics

Inbound:

- KM Concord to 12' Fresno pipeline
- Ethanol truck offloading
- Biodiesel truck offloading

Outbound:

- Major roadway: CA-99
- KM 6" military delivery line to Naval Air Station (NAS) Lemoore

» Loading Racks

- Seven truck loading racks
- Toptech TMS6 rack automation
- Midgrade blending
- Ethanol storage and sequential rack blending
- CARB detergent additive systems
- Diesel red dye injection services

» Other

- Diesel lubricity additive



Harbor Island Terminal

2720 13th Ave SW
Seattle, WA 98134

Phone: (206) 682-4706
Fax: (206) 682-8003

» Specifications

- 25 acres
- Number of tanks = 21
- Total storage capacity = 941,835 barrels
- Range of tanks = 6,000–80,000 barrels

» Marine Loading/Unloading

- Number of ship docks = 1 (45' MLW)
- Size of berths = 900'

» Products

- Gasolines, turbine, diesel, biodiesel, ethanol, marine fuel oils

» Logistics

Inbound:

- Pipeline: From Olympic pipeline
- Three-lane truck loading rack

Outbound:

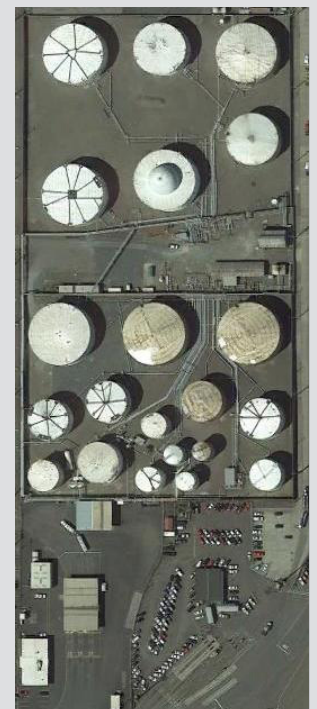
- Major roadway: I-5

» Services

- Midgrade blending
- Ethanol storage and sequential rack blending
- Detergent additive systems
- Diesel red dye injection services
- Biodiesel storage and rack blending (B5, B10, B15, B20)

» Other

- Diesel lubricity additive



NORTHERN REGION TERMINALS

Linnton Terminal

11400 NW St Helens Rd
Portland, OR 97231

Phone: (503) 286-1691
Fax: (503) 220-1270

» Specifications

- 17 acres
- Number of tanks = 20
- Total storage capacity = 420,008 barrels
- Range of tanks = 11,000–72,000

» Marine Loading/Unloading

- Number of ship docks = 2 on Willamette River (24' MLW)
- Size of berths = 740'

» Products

- Gasolines, diesel

» Logistics

Inbound:

- Pipeline: From Olympic pipeline
- Tanker/barge loading

Outbound:

- Tanker/barge unloading
- Pipeline service to SFPP Oregon line (Eugene)



Richmond Products Terminal

1306 Canal Blvd
Richmond, CA 94804

Phone: (510) 231-4700
Fax: (510) 231-4701

» Specifications

- 55 total acres
- 43 refined petroleum products tanks
- Total storage capacity = 533,900 barrels
- Range of tanks = 4,725–98,808 barrels

» Marine Loading/Unloading

- Number of ship docks = 1 (35' MLW)
- Size of berths = 1,600' wharf, 107' from main wharf, 247' overall dock

» Products

- CARB gas, CARB ULSD, ethanol

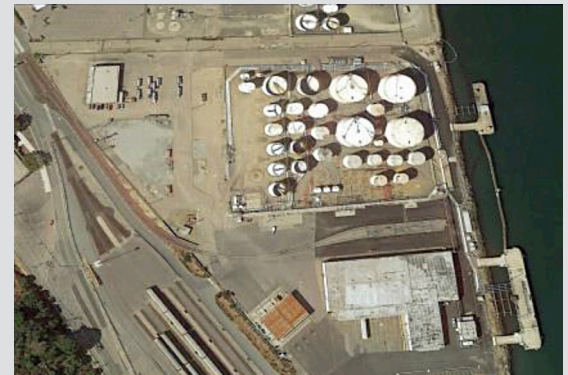
» Logistics

Inbound:

- Tanker/barge unloading
- KM 8" pipeline from Richmond Station
- Truck and rail ethanol offloading

Outbound:

- KM 8" pipeline to Richmond Station
- Truck rack
- Major roadways: I-580, I-80



» Loading Racks

- Five-lane truck loading rack
- Toptech TMS6 rack automation
- Midgrade blending
- Ethanol storage and ratio rack blending
- CARB detergent additive systems
- Diesel red dye injection services

» Other

- Diesel lubricity additive

NORTHERN REGION TERMINALS

Richmond Chemical Terminal

1140 Canal Blvd
Richmond, CA 94804

Phone: (510) 412-8810
Fax: (510) 232-9317

» Specifications

- 10 acres
- Total storage capacity = 639,271 barrels
- Number of tanks = 136
- Range of tanks = 714–55,000 barrels

» Marine Loading/Unloading

- Number of ship docks = 1 (38' MLW)
- Size of berths = 700'
- Land is available for expansion

» Products

- Chemicals, oilseeds, lubes, waxes

» Services

- Tank car loading/unloading
- Tank truck loading/unloading
- Tank truck weighing
- Laboratory testing
- Product heating
- Product blending



» Additive Handling/Injection

- Nitrogen blanketing

» Transportation Modes

- Servicing body of water = Santa Fe
- Harbor channel, San Francisco Bay
- Servicing railroad = BNSF
- Servicing major roadways = I-580

Reno Terminal

301 E Nugget Ave
Sparks, NV 89431

Phone: (775) 358-6971
Fax: (775) 358-7018

» Specifications

- 44 total acres
- 45 refined petroleum products tanks
- Total storage capacity = 748,400 barrels
- Range of tanks = 6,000–30,000 barrels

» Products

- Conventional gas, EPA ULSD, turbine, biodiesel, ethanol

» Logistics

Inbound:

- KM 6"/8"/10" Rocklin to Reno pipeline; Bay Area origin
- Truck and rail ethanol offloading

Outbound:

- Major roadway: I-80
- KM 6" pipeline to NAS Fallon
- Third-party connection to Reno Airport jet fuel pipeline

» Loading Racks

- Seven truck loading racks
- Toptech TMS6 rack automation
- Midgrade blending
- Ethanol storage and sequential rack blending
- EPA detergent additive systems
- Diesel red dye injection services

» Other

- Diesel lubricity additive



NORTHERN REGION TERMINALS

San Jose Terminal

2150 Kruse Drive
San Jose, CA 95131

Phone: (408) 435-7399
Fax: (408) 434-0283

» Specifications

- 20 total acres
- 32 refined petroleum products tanks
- Total storage capacity = 1,001,100 barrels
- Range of tanks = 10,000–100,000 barrels

» Products

- CARB gas, CARB ULSD (B5), turbine, biodiesel, ethanol

» Logistics

- Inbound:
- KM 10" Concord to San Jose pipeline
 - Ethanol and biodiesel truck offloading
- Outbound:
- Major roadway: I-680
 - Connection to San Jose Airport jet fuel pipeline



» Loading Racks

- Seven truck loading racks
- Toptech TMS6 rack automation
- Midgrade blending
- Ethanol storage and sequential rack blending
- CARB detergent additive systems
- Diesel red dye injection services

» Other

- Diesel lubricity additive

Willbridge Terminal

5880 NW St Helens Rd
Portland, OR 97210

Phone: (503) 220-1260
Fax: (503) 220-1270

» Specifications

- 44 acres
- Number of tanks = 40
- Total storage capacity = 1,551,000 barrels
- Range of tanks = 3,000–120,000 barrels

» Marine Loading/Unloading

- Number of ship docks = 1 (32' MLW)
- Number of berths = 2 on Willamette River
- Size of berths = 695'
- Warehouse space: 53,500 ft²

» Products

- Gasoline, turbine, diesel, biodiesel, ethanol

» Logistics

- Inbound:
- Pipeline: From Olympic Pipeline and third-party terminals
 - Tanker/barge unloading
 - Tank car unloading (BNSF)
 - Tank truck unloading
- Outbound:
- Major roadway: US-30 (St Helens Rd)
 - Tanker/barge loading
 - Three-lane truck loading rack
 - Pipeline service to SFPP Oregon line (Eugene) and Cochin/Portland Airport line



» Services

- Midgrade blending
- Ethanol storage and sequential rack blending
- Detergent additive systems
- Diesel red dye injection services
- Biodiesel storage and rack blending (B5, B10, B15, B20)

» Other

- Diesel lubricity additive

Pacific Operations Southern Region

The Southern Region consists of a gathering system at Watson, California, that offers third-party terminal connectivity to multiple destinations in Southern California; Phoenix, Arizona; and Las Vegas, Nevada. Kinder Morgan's Carson, California, terminal provides third-party terminal outbound connectivity to the Watson Station via the Sepulveda Junction.

The El Paso, Texas, gathering system in the Southern Region connects third-party terminals to terminals in Phoenix and Tucson, Arizona.

Schematics for the gathering system, pipelines and terminals follow, along with specifications and services provided at each Kinder Morgan terminal.



Southern Region Systems Map

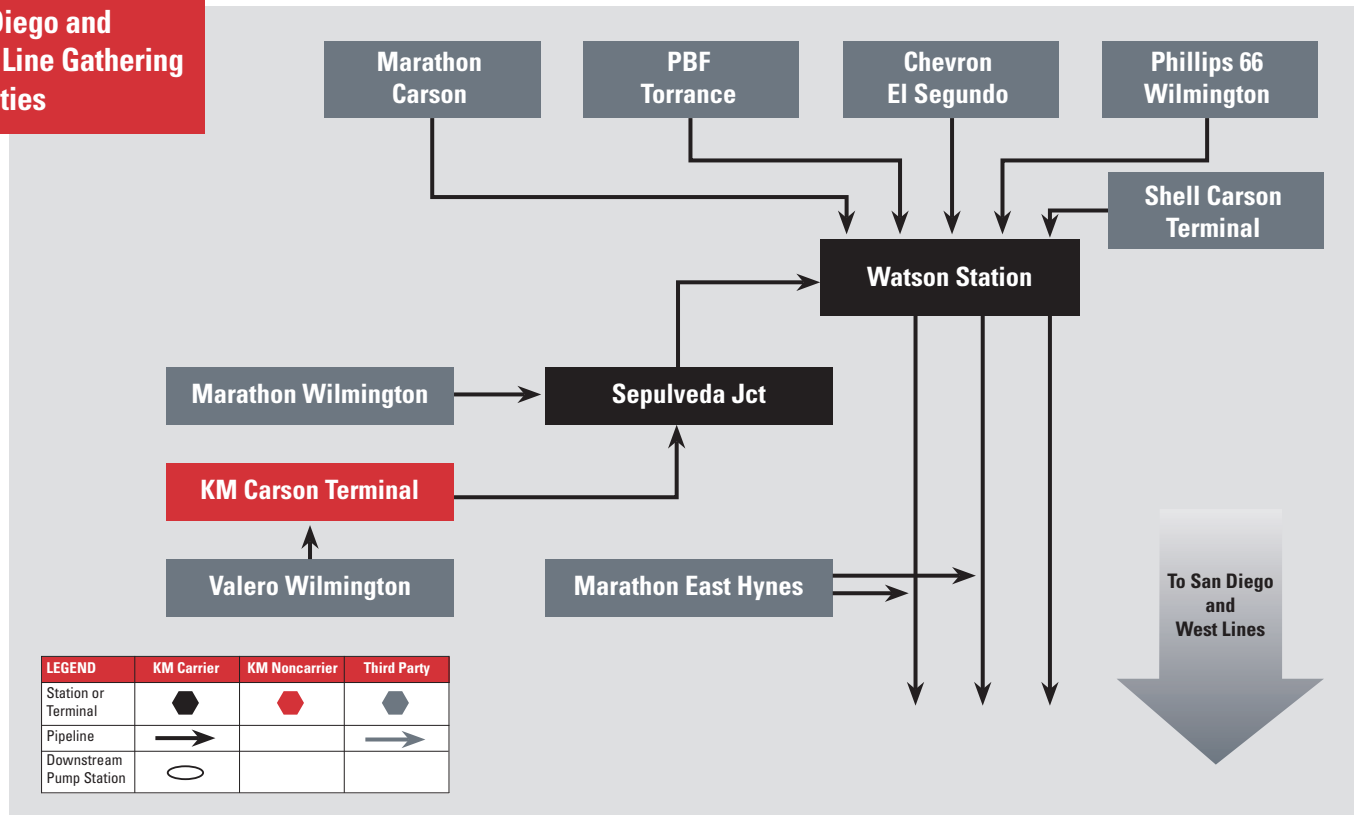


SOUTHERN REGION | Gathering Facilities and Pipelines

Southern Region Origins and Destinations

West Line	Origin - Watson, Station - Carson, CA terminal - East Hynes	Destination - Colton, CA - Imperial, CA	- Phoenix, AZ - Ontario, CA
East Line	Origin - El Paso Station	Destination - Tucson, AZ - Phoenix, AZ	- Road Forks, NM
San Diego Line	Origin - Watson Station - Carson, CA terminal - East Hynes	Destination - Orange, CA - Mission Valley, CA	- San Diego, CA - John Wayne Airport
Calnev Line	Origin - Carson, CA Terminal - Watson Station	Destination - Barstow, CA - Las Vegas, NV	- McCarran Airport
Other Southern Region Terminals	Origin - Berth 118 - Third-party Terminals	Destination - Carson Terminal	

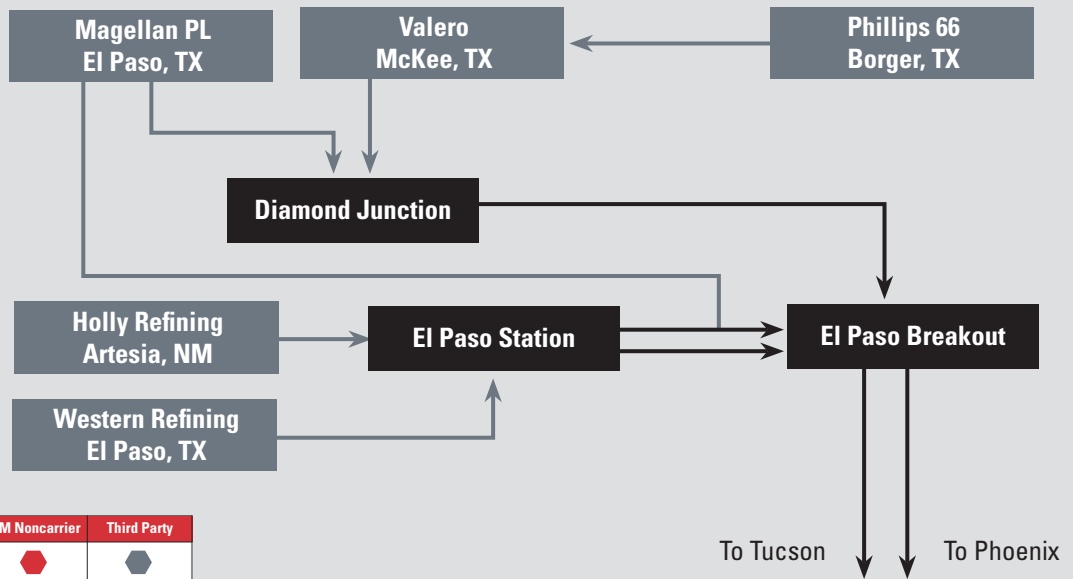
San Diego and West Line Gathering Facilities



SOUTHERN REGION | Gathering Facilities and Pipelines



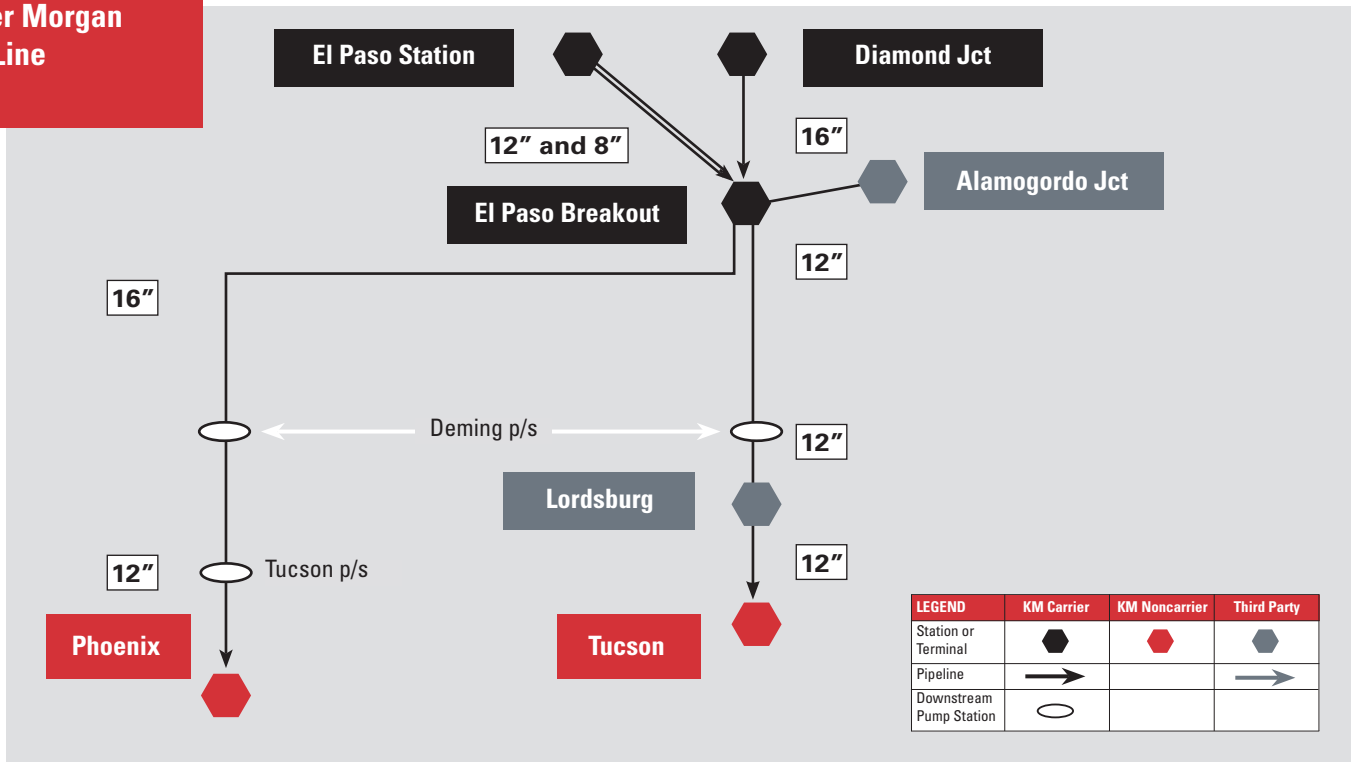
East Line Gathering Facilities



LEGEND	KM Carrier	KM Noncarrier	Third Party
Station or Terminal	⬢	⬢	⬢
Pipeline	→		→
Downstream Pump Station	○		

SOUTHERN REGION | Gathering Facilities and Pipelines

Kinder Morgan East Line



ORIGINS

El Paso, TX	Input for El Paso suppliers to El Paso breakout
Diamond Jct	Input for Texas Panhandle and East Texas suppliers gathering line to El Paso breakout
El Paso Breakout	Input for East Lines

DESTINATIONS

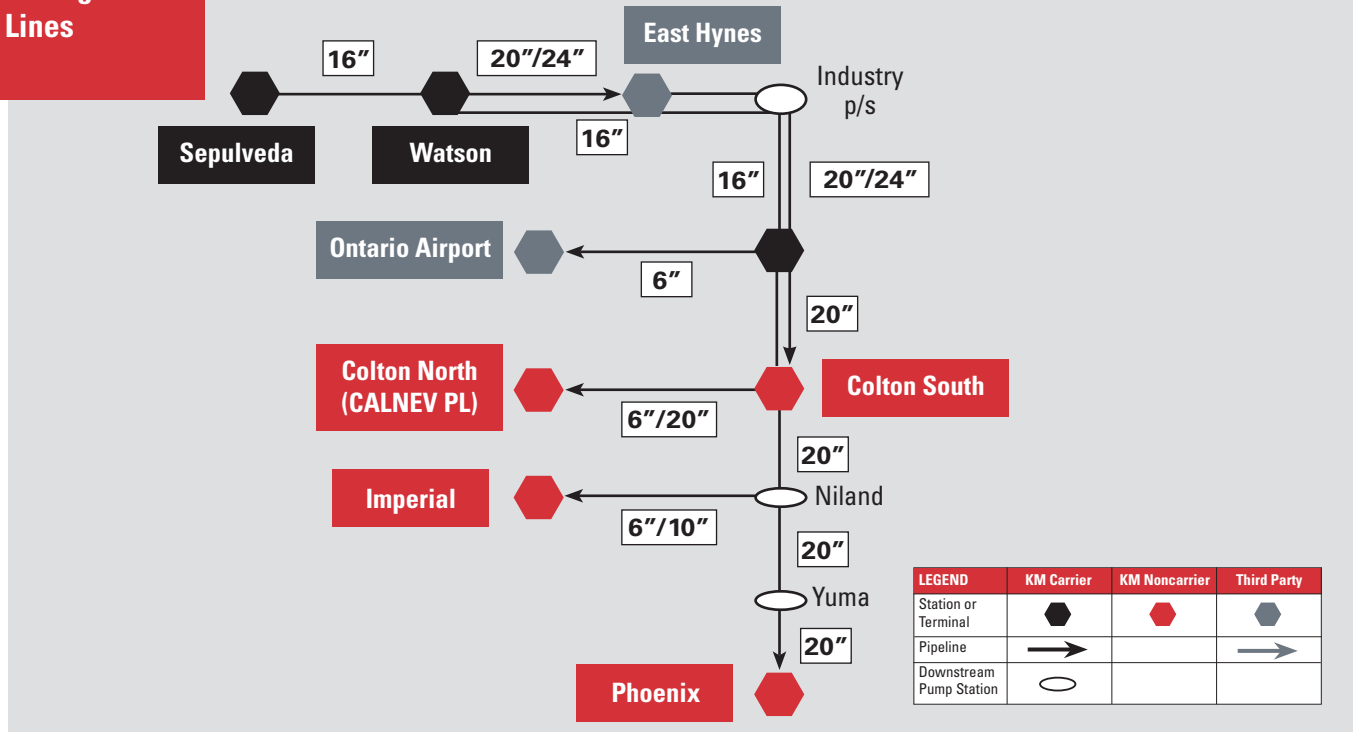
Lordsburg, NM	Deliveries to third-party terminal	Diesel
Tucson, AZ	Deliveries to KM	Gasoline, diesel, jet fuel
Phoenix, AZ	Deliveries to KM and third party terminals; third-party connecting pipeline for jet fuel to Sky Harbor Airport	Gasoline, diesel, jet fuel

Notes:

- » Lines are operated by SFPP, LP
- » Service via 12" line from El Paso breakout to Tucson
- » Service via 16" line from El Paso breakout to Phoenix
- » Breakout facilities at El Paso breakout
- » 16" line does not deliver to Tucson

SOUTHERN REGION TERMINALS

Kinder Morgan West Lines



ORIGINS

Sepulveda PL	Gathering line to Watson; additional tariffs apply
Watson	Via gathering lines into breakout facility; West Line origin
East Hynes	West Line injection point for third-party facility

DESTINATIONS

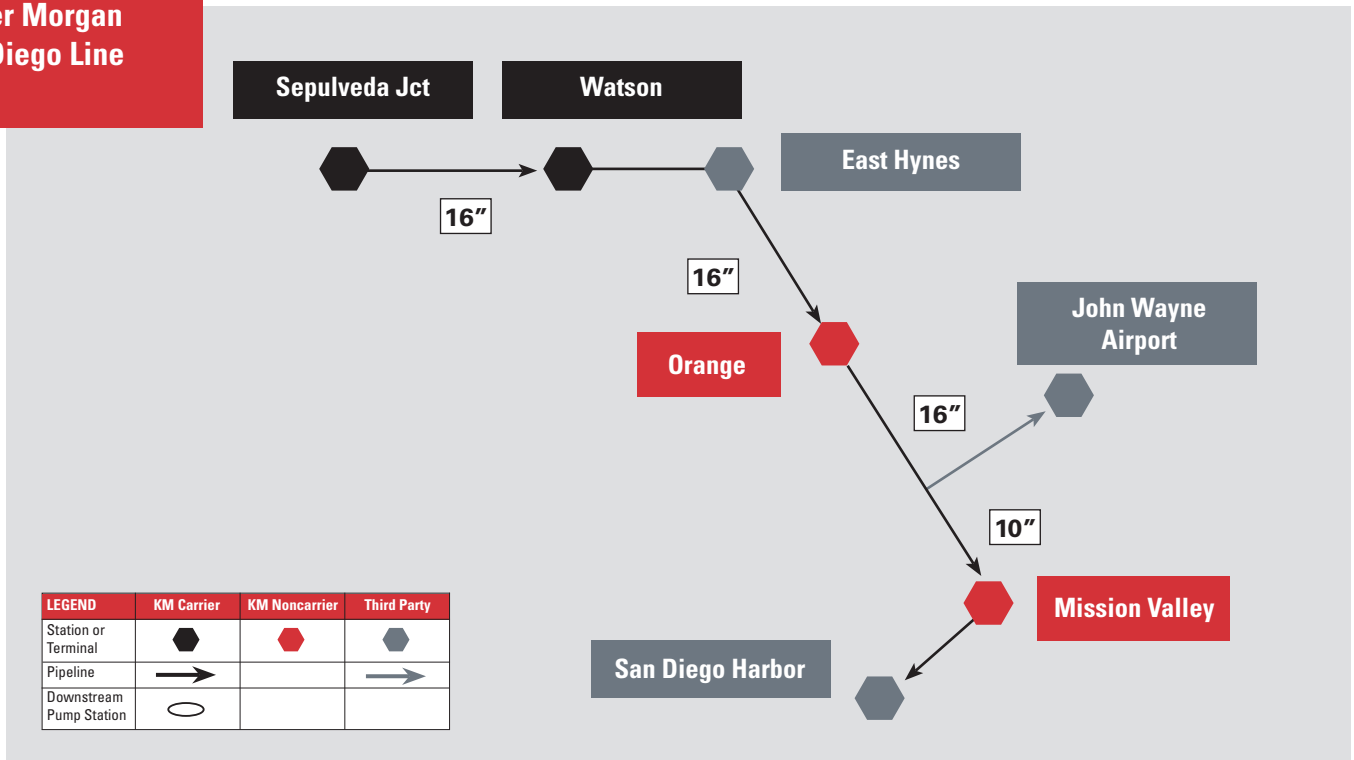
East Hynes	Deliveries to third-party terminal	Gasoline, diesel, jet fuel
Ontario Airport	Deliveries into airport storage	Jet fuel
Colton	Deliveries to KM and third-party terminals; breakout facilities for SFPP West Line; connection point for CALNEV pipeline	Gasoline, diesel, jet fuel
Imperial	KM terminal	Gasoline, diesel
Phoenix	Deliveries to KM and third-party terminals; Third-party connecting pipeline to Sky Harbor Airport	Gasoline, diesel, jet fuel

Notes:

- » Lines are operated by SFPP, LP
- » Service from Sepulveda Jct via SFPP pipeline
- » Service via 16" pipeline to CALNEV pipeline
- » Service from East Hynes via 20"/24" line and connection at Colton
- » Service via 20"/24" line from Watson to Ontario and Colton
- » Breakout facilities at Niland for Imperial

SOUTHERN REGION | Gathering Facilities and Pipelines

Kinder Morgan San Diego Line



ORIGINS

Sepulveda PL	Gathering line to Watson; additional tariffs apply
Watson	Via gathering lines into breakout facility; San Diego line origin
East Hynes	San Diego line injection point for third-party facility

DESTINATIONS

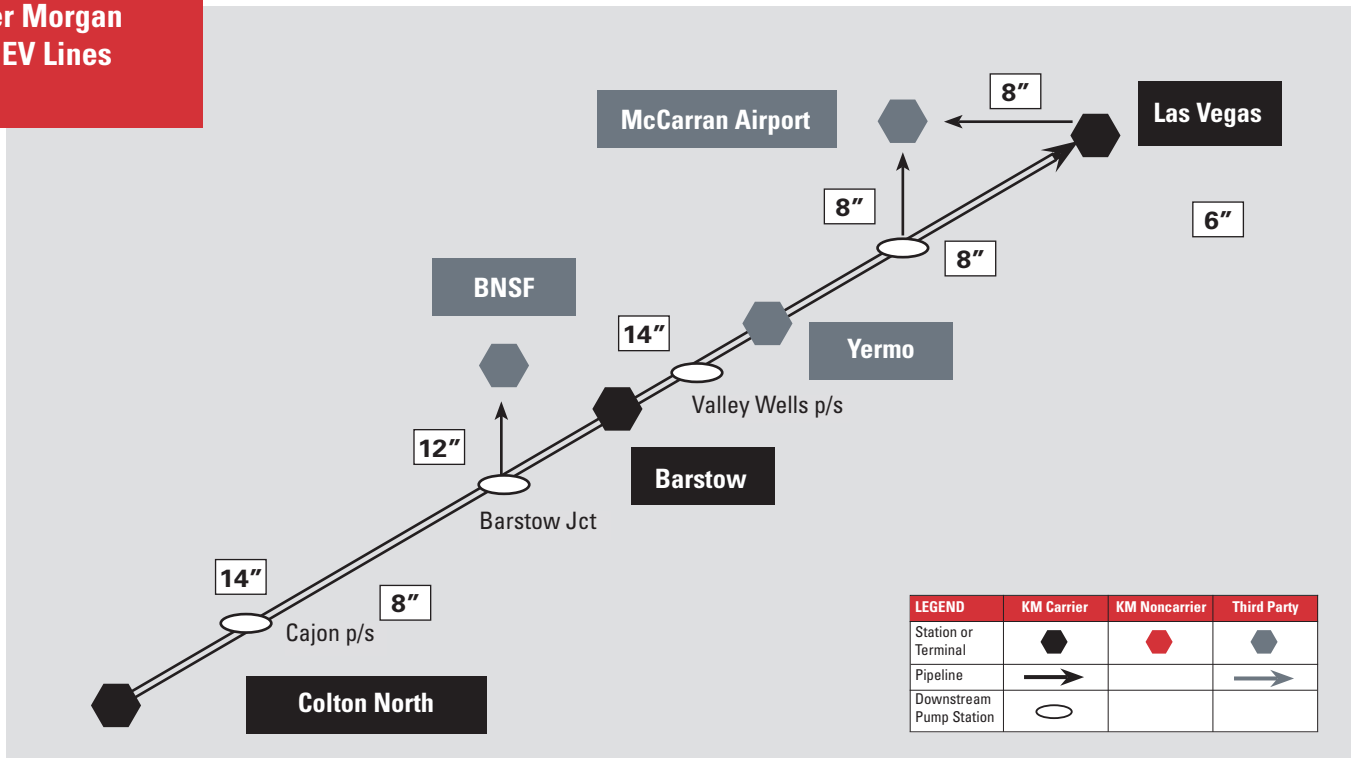
Orange	KM terminal	Gasoline, diesel
Mission Valley	KM terminal	Gasoline, diesel
San Diego Harbor	Third-party terminals; connecting pipeline to San Diego Airport	Gasoline, diesel, jet fuel
John Wayne Airport (Orange County)	Third party connecting pipeline to John Wayne Airport	Jet fuel

Notes:

- » Lines are operated by SFPP, LP
- » Service from Sepulveda Jct via SFPP pipeline, and the intrastate tariff applies

SOUTHERN REGION | Gathering Facilities and Pipelines

Kinder Morgan CALNEV Lines



ORIGINS

Sepulveda PL (SFPP)	Connecting line to Watson; additional tariffs apply
Watson (SFPP)	Via gathering lines into breakout facility; West Line origin; CALNEV origin
East Hynes (SFPP)	West Line injection point for third-party facility; CALNEV origin

DESTINATIONS

Barstow Jct, CA	Deliveries to third-party terminal	Diesel
Barstow Terminal, CA	Deliveries to KM and third-party terminals	Gasoline, diesel
Yermo, CA	Deliveries to railroad yard	Diesel
McCarran Airport, NV	Deliveries to airport storage	Jet fuel
Las Vegas, NV	Deliveries to KM and third-party terminals	Gasoline, diesel, jet fuel

Notes:

- » From origins to Colton, pipelines operated by SFPP, LP
- » From Colton North to destinations, pipelines operated by CALNEV Pipe Line, LLC
- » CALNEV Pipe Line, LLC 14" pipeline carries multiple products
- » CALNEV 8" pipeline carries jet fuel only
- » Jet fuel deliveries to Las Vegas terminal for transshipment to McCarran Airport only

SOUTHERN REGION TERMINALS

Barstow Terminal

34277 Dagget-Yermo Rd
Dagget, CA 92327

Phone: (760) 254-2616
Fax: (760) 254-2446

» Specifications

- 43 total acres
- 12 refined petroleum products tanks
- Total storage capacity = 165,600 barrels
- Range of tanks = 3,000–17,500 barrels

» Products

- CARB gas, CARB ULSD, ethanol

» Logistics

- Inbound:
- KM 14" CALNEV Colton to Las Vegas pipeline
 - Ethanol truck offloading
- Outbound:
- Major roadways: I-15, I-40

» Loading Racks

- Two truck loading racks
- Toptech TMS6 rack automation
- Midgrade blending
- Ethanol storage and sequential rack blending
- CARB detergent additive systems
- Diesel red dye injection services

» Other

- Diesel lubricity additive



Carson Terminal

2000 E Sepulveda Blvd
Carson, CA 90810

Phone: (310) 518-7700
Fax: (310) 549-5708

» Specifications

- 100 acres
- Number of tanks = 63
- Total storage capacity = 5,705,000 barrels
- Range of tanks = 9,000–178,000 barrels

» Marine Loading/Unloading

- Number of ship docks = 1 (35' MLW)
- Number of berths = 118–120; Port of Los Angeles, 32' 5" alongside; 37' 4" with fenders
- Size of berths = 800'
- Number of barge docks = 1

» Products

- Crude oil, gasoline, turbine, diesel, gasoline blending components, refinery feedstocks

» Logistics

- Inbound:
- Pipelines from terminals and refineries
 - Tanker/barge unloading
- Outbound:
- Major roadways: I-405, I-110, I-710
 - Tanker/barge loading
 - Pipeline service to local refineries, Los Angeles Airport
 - KM origin for West and South lines
 - Ten-lane truck loading rack



» Services

- Toptech TMS6 truck rack
- CARB detergent additive systems
- Diesel red dye injection services
- Detergent community additive
- Diesel lubricity additive
- Ethanol storage and rack injection

SOUTHERN REGION TERMINALS

Colton Terminal

2359 South Riverside Ave
Bloomington, CA 92316

Phone: (909) 877-2141
Fax: (909) 877-5549

» Specifications

- 82 total acres
- 32 refined petroleum products tanks
- Total storage capacity = 1,223,100 barrels
- Range of tanks = 5,000–92,000 barrels

» Products

- CARB gas, CARB ULSD (B5), biodiesel, ethanol

» Logistics

Inbound:

- KM 16" multiproducts pipeline from Watson area to CALNEV
- KM 20"/24" multiproducts pipeline from Watson area
- Ethanol truck offloading
- Transmix truck offloading
- Biodiesel truck offloading

Outbound:

- Major roadways: I-10, I-215
- 20" multiproducts pipeline to CALNEV, Imperial and Phoenix
- KM 6" military pipeline to March AFB

» Loading Racks

- Seven truck loading racks
- Toptech TMS6 rack automation
- Midgrade gasoline blending
- Ethanol storage and sequential rack blending
- CARB detergent additive systems
- Diesel red dye injection services

» Other

- Adjacent transmix processing facility
- Diesel lubricity additive



Imperial Terminal

345 West Aten Rd
Imperial, CA 92251

Phone: (760) 352-0677
Fax: (760) 352-4358

» Specifications

- 13 total acres
- 27 refined petroleum products tanks
- Total storage capacity = 459,000 barrels
- Range of tanks = 10,000–43,000 barrels

» Products

- CARB gas, EPA ULSD, CARB ULSD, ethanol

» Logistics

Inbound:

- KM 6"/10" Niland to Imperial lateral (Watson area origin)
- Ethanol truck offloading

Outbound:

- Major roadways: I-8, CA-86
- KM 4" pipeline to Naval Air Facility (NAF) El Centro

» Loading Racks

- Three truck loading racks
- Toptech TMS6 rack automation
- Midgrade blending
- Ethanol storage and sequential rack blending
- CARB detergent additive systems
- Diesel red dye injection services

» Other

- Diesel lubricity additive



SOUTHERN REGION TERMINALS

Las Vegas Terminal

5049 N Sloan Lane
Las Vegas, NV 89115

Phone: (702) 644-3943
Fax: (702) 644-2236

» Specifications

- 66 total acres
- 39 refined petroleum products tanks
- Total storage capacity = 1,163,700 barrels
- Range of tanks = 3,000–96,000 barrels

» Products

- EPA gas, EPA ULSD (B5), biodiesel, ethanol

» Logistics

Inbound:

- KM 14" Colton to Las Vegas pipeline
- KM 8" Colton to Las Vegas turbine line
- Ethanol rail offloading
- Biodiesel truck offloading

Outbound:

- Major roadways: I-15
- KM 8" pipeline to Nellis Air Force Base (AFB)
- KM 8" pipeline to Bracken Jct and McCarran Airport

» Loading Racks

- Fifteen-lane truck loading rack
- Toptech TMS6 rack automation
- Midgrade blending
- Ethanol storage and sequential rack blending
- EPA detergent additive systems
- Diesel red dye injection services

» Other

- Diesel lubricity additive



Lomita Rail Terminal

24710 Wilmington Ave.
Carson, CA 90745

Phone: (310) 233-7600

» Specifications

- 7 total acres
- Capacity for 110 car unit trains

» Products

- Ethanol

» Logistics

Inbound:

- Ethanol rail offloading

Outbound:

- Pipelines to Shell Southern California Distribution Complex

» Other

- Sampling services provided



SOUTHERN REGION TERMINALS

Mission Valley Terminal

9950 San Diego Mission Rd
San Diego, CA 92108

Phone: (619) 283-6511
Fax: (619) 283-3120

» Specifications

- 66 total acres
- 24 refined petroleum products tanks
- Total storage capacity = 680,400 barrels
- Range of tanks = 8,000–100,000 barrels

» Products

- CARB gas, CARB ULSD (B5), biodiesel, ethanol

» Logistics

Inbound:

- KM 16"/10" Watson to San Diego pipeline (intermediate delivery)
- Ethanol and biodiesel truck offloading

Outbound:

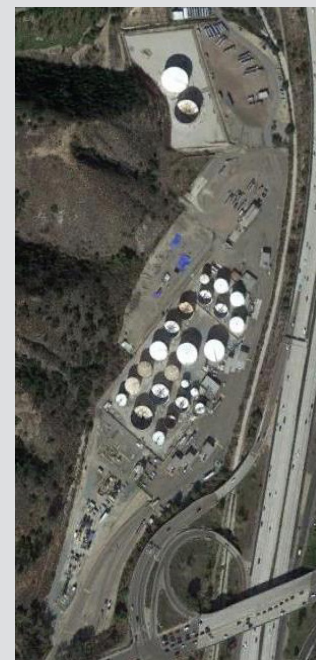
- Major roadways: I-5, I-8, I-805

» Loading Racks

- Six truck loading racks
- Toptech TMS6 rack automation
- Midgrade blending
- Ethanol storage and sequential rack blending
- CARB detergent additive systems
- Diesel red dye injection services

» Other

- Diesel lubricity additive



Orange Terminal

1350 N Main St
Orange, CA 92667

Phone: (714) 538-5227
Fax: (714) 538-0207

» Specifications

- 10 total acres
- 9 refined petroleum products tanks
- Total storage capacity = 216,600 barrels
- Range of tanks = 20,000–50,000 barrels

» Products

- CARB gas, CARB ULSD, ethanol

» Logistics

Inbound:

- KM 16"/10" Watson to San Diego pipeline (intermediate delivery)
- Ethanol truck offloading

Outbound:

- Major roadways: I-5, CA-57

» Loading Racks

- Two truck loading racks
- Toptech TMS6 rack automation
- Midgrade blending
- Ethanol storage and sequential rack blending
- CARB detergent additive systems
- Diesel red dye injection services

» Other

- Diesel lubricity additive



SOUTHERN REGION TERMINALS

Phoenix Terminal

49 North 53rd Ave
Phoenix, AZ 85043

Phone: (602) 278-8564
Fax: (602) 269-8518

» Specifications

- 83 total acres
- 61 refined petroleum products tanks
- Total storage capacity = 1,956,200 barrels
- Range of tanks = 10,000–90,000 barrels

» Products

- Conventional gas, AZCBG gas, EPA ULSD, turbine, biodiesel, ethanol

» Logistics

Inbound:

- KM 20" Colton to Phoenix pipeline; Watson area origin
- KM 12"/16" El Paso to Phoenix pipeline
- Truck and rail ethanol offloading
- Biodiesel rail offloading

Outbound:

- Major roadways: I-10
- KM 6" pipeline to Luke AFB
- Connection to Sky Harbor Airport jet fuel pipeline



» Loading Racks

- Eleven truck loading racks
- Toptech TMS6 rack automation
- Midgrade blending
- Ethanol storage and sequential rack blending
- EPA detergent additive systems
- Diesel red dye injection services

» Other

- Biodiesel community storage and blending up to 5%
- Diesel lubricity additive

Tucson Terminal

3841 E Refinery Way
Tucson, AZ 85713

Phone: (520) 514-1065
Fax: (520) 790-3396

» Specifications

- 160 total acres
- 44 refined petroleum products tanks
- Total storage capacity = 1,080,000 barrels
- Range of tanks = 6,000–80,000 barrels

» Products

- Conventional gas, EPA ULSD, turbine, ethanol, export gas

» Logistics

Inbound:

- KM 12" El Paso to Tucson pipeline
- Truck and rail ethanol offloading

Outbound:

- Major roadways: I-10
- KM 6" pipeline to Davis Monthan AFB



» Loading Racks

- Six truck loading racks
- Toptech TMS6 rack automation
- Midgrade blending
- Ethanol storage and sequential rack blending
- EPA detergent additive system
- Diesel red dye injection services

» Other

- Diesel lubricity additive

CONNECTING PIPELINES



KM CONNECTION LOCATION	KM ORIGINATING PIPELINE	CONNECTING PIPELINE	DESTINATION
West Capitol Jct	North Line	Wickland	Sacramento Airport
San Jose Terminal	San Jose Line	Wickland	San Jose Airport
Reno Terminal	North Line	Buckeye	Reno Airport
Tustin Take Off	San Diego Line	Wickland	John Wayne Airport
San Diego Harbor	San Diego Line	Buckeye	San Diego Airport
Phoenix	East Line West Line	AFFC	Sky Harbor Airport

For more information, please visit
www.kindermorgan.com/pages/business/products_pipelines/pacific_operations.aspx

