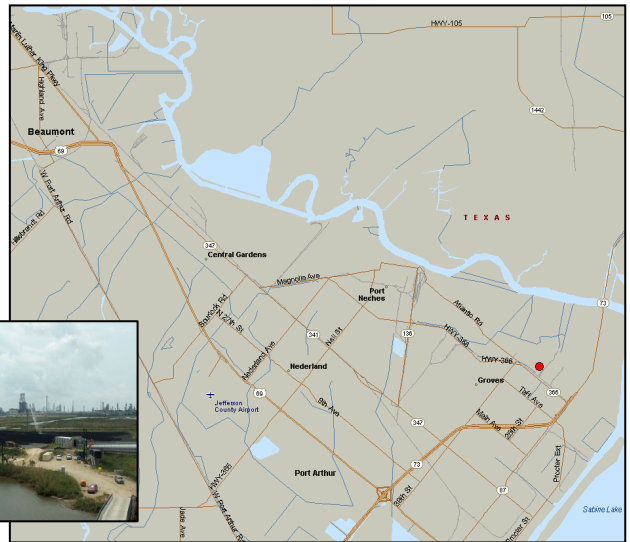


# Total Port Arthur Terminal



*Delivering Energy To Improve Lives And Create A Better World*

## Terminal Specifications

- Located on the Neches River
- Annual Throughput: 1,000,000 tons per year
- Design System Rate: 2,500 tons per hour (loading)

## Commodities Handled

- Petcoke

## Access

- Marine service via one ship dock (40' MLW) accessible by the Neches River
- Highway access from Highway 73 and Highway 366

## Terminal Services

- Coke Cutting to Coke Pit to Conveyor
- Storage to Vessel
- Conveyor To / From storage

## Major Features

- Traveling Shiploader
- Panamax Class Dock with 40' Draft

### Terminal Address

7600 32nd Street  
Port Arthur, TX 77642  
(409) 985-0269



### Business Address

300 Beltway Green Blvd.  
Pasadena, TX 77503  
(832) 463-4797

*Kinder Morgan provides energy transportation and storage services in a safe, efficient and environmentally responsible manner for the benefit of people, communities and businesses*