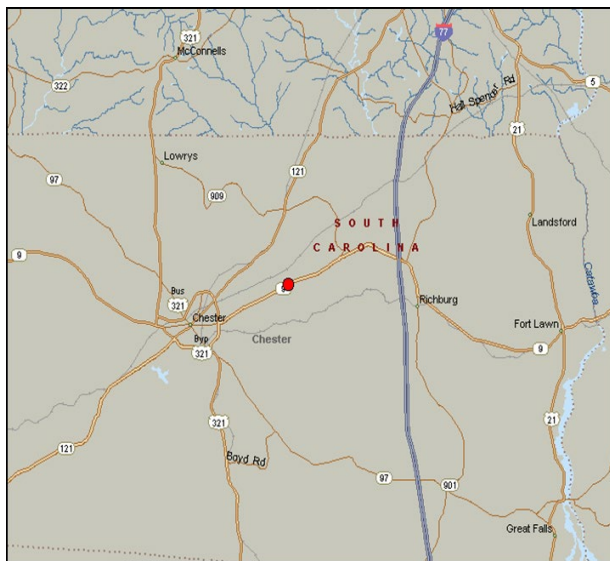


# Chester Terminal



*Delivering Energy To Improve Lives And Create A Better World*

## Terminal Specifications

- ❑ 26 acres
- ❑ 26 tanks ranging in size from 1,600 barrels to 3,800 barrels with a total storage capacity of 34,816 barrels

## Commodities Handled

- ❑ Chemicals and Plastic Pellets

## Access

- ❑ Highway access from Interstates 77, 85 and 95; Highways 21, 76, 79, and 321
- ❑ Rail access from Lancaster and Chester (Class 3, with CSX & NS connections)

## Terminal Services

- ❑ Loading and Unloading Services by Tank Truck and Tank Car
- ❑ Transloading
- ❑ Railcar Storage
- ❑ Rail Unloading Rack
- ❑ Product Blending / Heating
- ❑ Truck Scale
- ❑ Truck Loading Rack
- ❑ Metered Truck Loading
- ❑ Nitrogen System Available
- ❑ Additional Services Available
- ❑ Expansion Opportunities – 20 Acres

### Terminal Address

1588 Lancaster Highway  
Chester, SC 29706  
803-581-6236



### Business Address

1500 Greenleaf Street  
Charleston, SC 29405  
843-853-0453

*Kinder Morgan provides energy transportation and storage services in a safe, efficient and environmentally responsible manner for the benefit of people, communities and businesses*