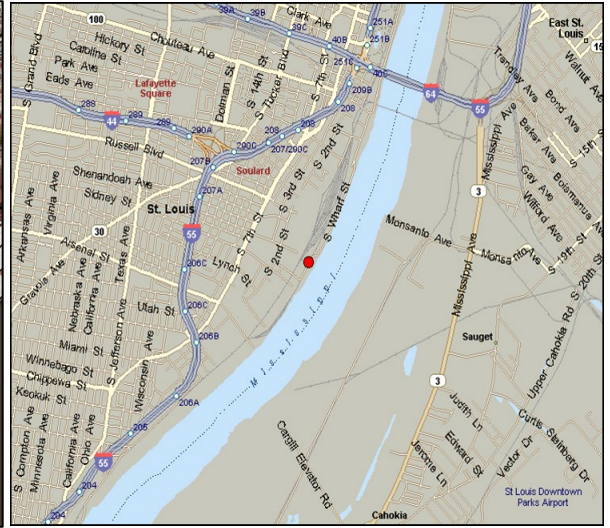
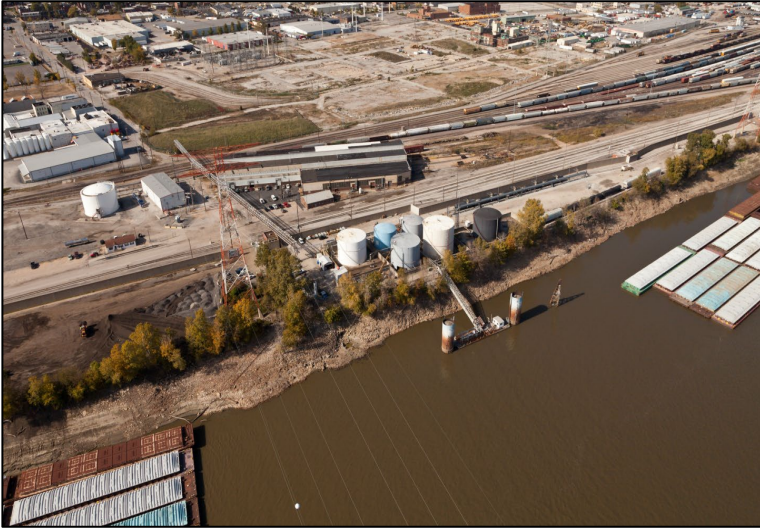


# St. Louis Terminal



***Delivering Energy To Improve Lives And Create A Better World***

## Terminal Specifications

- 12 acres located on the Mississippi River (Mile Marker 178.0 – right at descending bank)
- 17 tanks ranging in size from 1,200 barrels to 24,000 barrels with a total storage capacity of 110,149 barrels

## Commodities Handled

- Specialty and Commodity Chemicals, Herbicides

## Access

- Marine service via one barge dock (15') accessible by the Mississippi River
- Rail access from Union Pacific and TRRA
- Highway access from Interstates 44, 55, 64 and 70

## Terminal Services

- Loading and Unloading Services by Barge, Tank Truck and Tank Car
- Handling of Iso-containers

## Major Features

- 30 Railcar Spots
- Tanks and Barge Steaming, including Third Parties
- Certified Weigh Scale for Tank Trucks

### Terminal Address

2426 S. Wharf St.  
St. Louis, MO 63104  
314-776-6629



### Business Address

One Terminal Road  
Carteret, NJ 07008  
732-541-5161

***Kinder Morgan provides energy transportation and storage services in a safe, efficient and environmentally responsible manner for the benefit of people, communities and businesses***